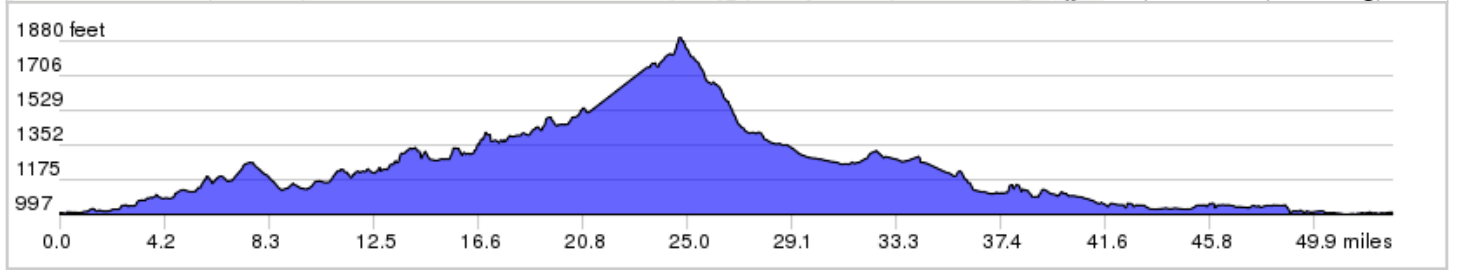
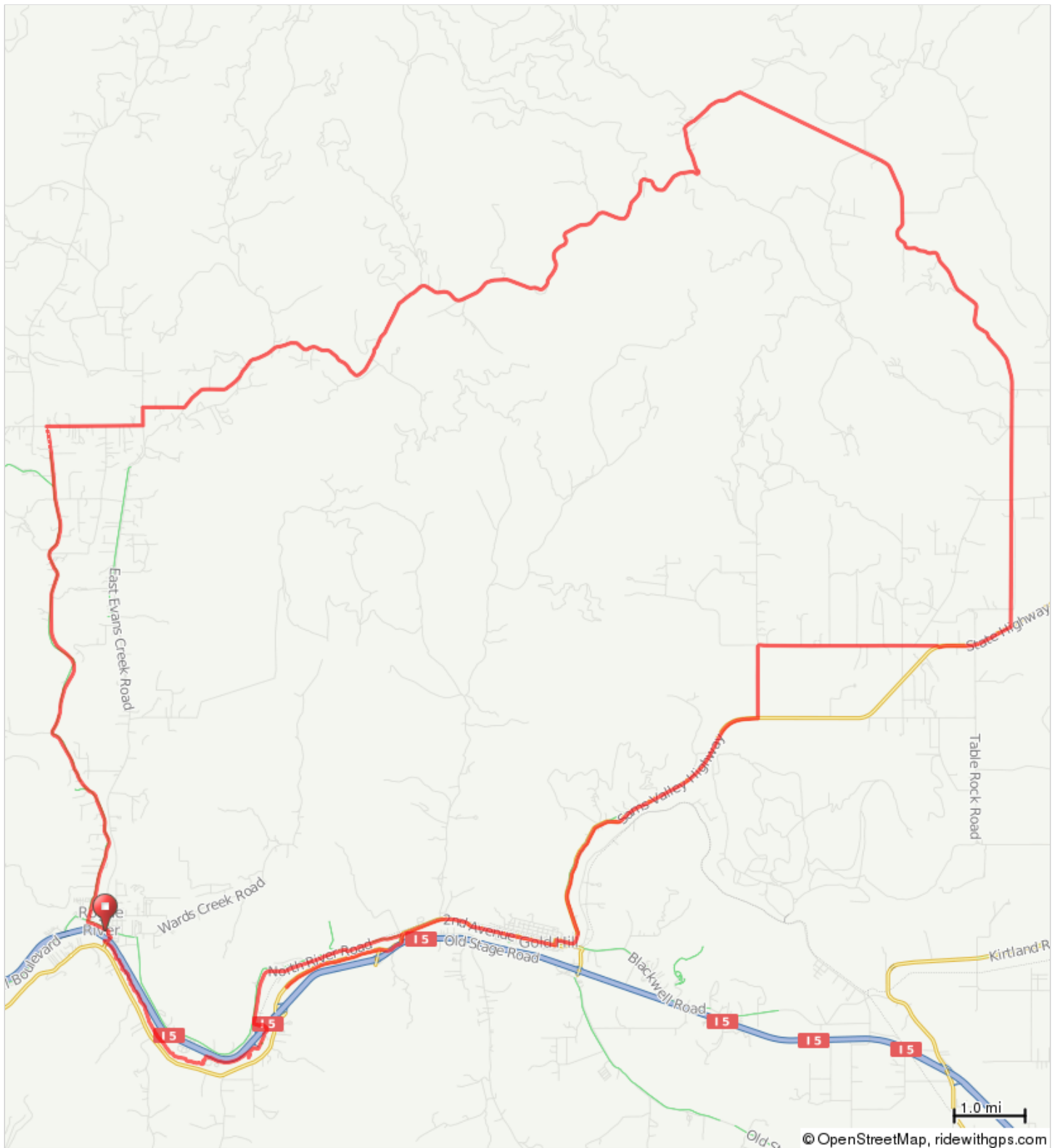


FIRECRACKER 50



FIRECRACKER 50

0.	0.0	0.0	▀	Start of route
1.	0.1	0.1	↑	Continue onto Foothill Blvd
2.	0.3	0.1	→	R onto W Evans Creek Rd
3.	7.7	7.4	→	R onto Queens Branch Rd
4.	9.0	1.3	←	L onto E Evans Creek Rd
5.	9.3	0.3	→	R to stay on E Evans Creek Rd
6.	11.8	2.5	→	Slight R
7.	11.8	0.0	→	Sharp R onto E Evans Creek Rd
8.	14.3	2.5	→	Slight R to stay on E Evans Creek Rd
9.	30.7	16.4	→	R onto OR-234 W/Sams Valley Hwy
10.	31.7	1.1	→	R onto Sams Valley Rd
11.	34.2	2.5	←	L onto Ramsey Rd
12.	35.3	1.0	→	R onto OR-234 W/Sams Valley Hwy
13.	40.1	4.8	←	L onto Dardanelles St
14.	40.2	0.1	→	R onto OR-234 W/OR-99 N/Rte 99 N/State 99 N/State Route 99 N/2nd Ave
15.	46.1	5.9	←	L onto N River Rd
16.	48.8	2.7	←	L onto Twin Bridges Rd
17.	48.9	0.1	↑	Continue onto Valley of the Rogue State Pr
18.	49.5	0.5	←	L toward The Rogue River Greenway
19.	49.5	0.0	→	R onto The Rogue River Greenway
20.	49.6	0.1	←	L onto Valley of the Rogue State Pr

49.6 miles. +2075/-2071 feet

21.	50.2	0.6	←	Slight L toward The Rogue River Greenway
22.	50.4	0.2	→	R onto The Rogue River Greenway
23.	52.8	2.4	←	L onto Depot St
24.	52.9	0.1	←	L onto Pine St
25.	53.0	0.1	←	Slight L onto W Main St
26.	53.0	0.0	▀	End of route

3.4 miles. +29/-36 feet